



DIRECT INTERNET 3

Install Guide for the Mac OS® Operating System

Overview

Iridium's Direct Internet Data Service allows customers to connect directly to the Internet through the Iridium gateway. While special software is not required for this service, Iridium offers the Direct Internet 3 software to provide enhanced Internet connectivity.

Direct Internet 3 offers a new accelerator with improved text compression, image compression and network optimization technology. As a result, Direct Internet 3 significantly improves internet access speeds as compared to previous versions of Direct Internet or no acceleration. Executing file transfers, browsing the Internet and exchanging emails is now done more efficiently and quickly with Direct Internet 3.

This documentation provides complete instructions on installing Direct Internet 3 on your computer with the Mac OS® operating system. Direct Internet 3 supports Mac OS® operating systems versions 10.4 or later.

Before Installing

Verify that the following has been done before installing Direct Internet 3.

- 1) You have a printed copy of this install guide.
- 2) You have administrator privileges on your computer.
- 3) You have the appropriate hardware to connect your Iridium satellite phone or transceiver to your computer. Your Iridium satellite phone or transceiver is powered on and connected to the computer.

Iridium Equipment Type	Connection Hardware
9505A Portable Phone	Data Kit (ADKT0602) OR RS232 Data Adapter (RDA0401), RS232 Data Cable
9555 Portable Phone	USB-Mini Cable 9555 (USBC0801)
9522B Satellite Transceiver	Cable Assembly with RS232 Connection (included)

- 4) **IT IS STRONGLY RECOMMENDED THAT IRIIDIUM 9555 SATELLITE PHONES ARE UPGRADED WITH HT10001 FIRMWARE OR LATER. IRIIDIUM DOES NOT SUPPORT USE OF THIS PRODUCT WITH PRIOR FIRMWARE RELEASES.**



Occasionally, dialogs can open behind other open windows. If you have been on one step longer than 2 minutes, check behind any open windows to see if the next step is waiting behind it.



Installation of the Iridium 9555 USB driver (VCOMPORT) is **NOT** required for the Mac OS operating system.

Configure Dial-Up Network Connection

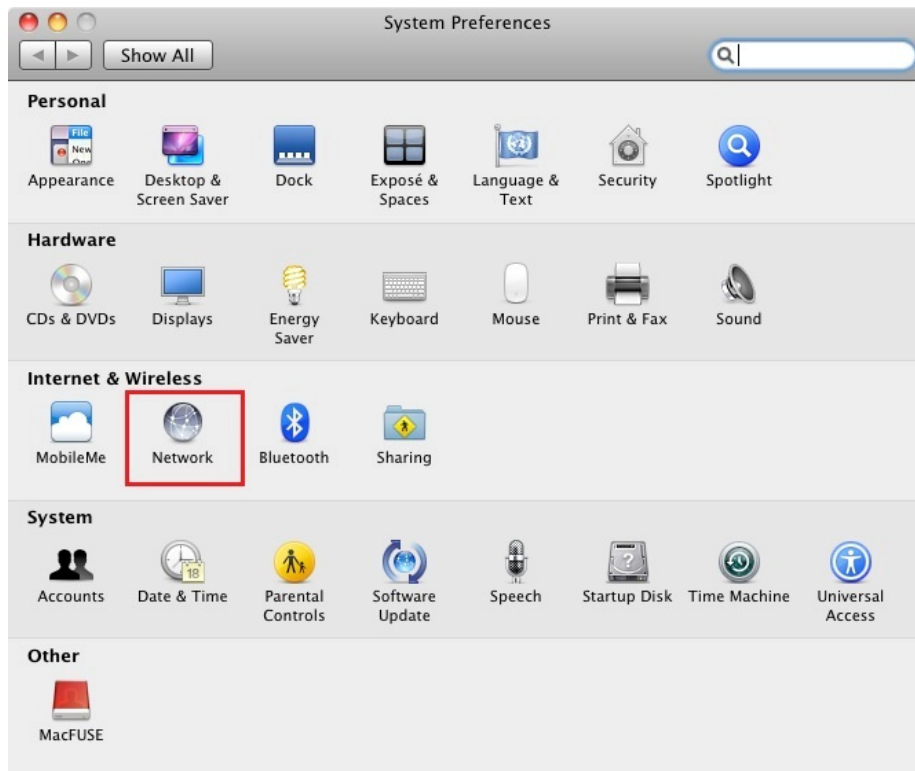
This section provides instructions on configuring the dial-up connection for Direct Internet 3.

- 1) Connect the Iridium satellite phone or transceiver to the computer.
- 2) Power on the Iridium satellite phone or transceiver.

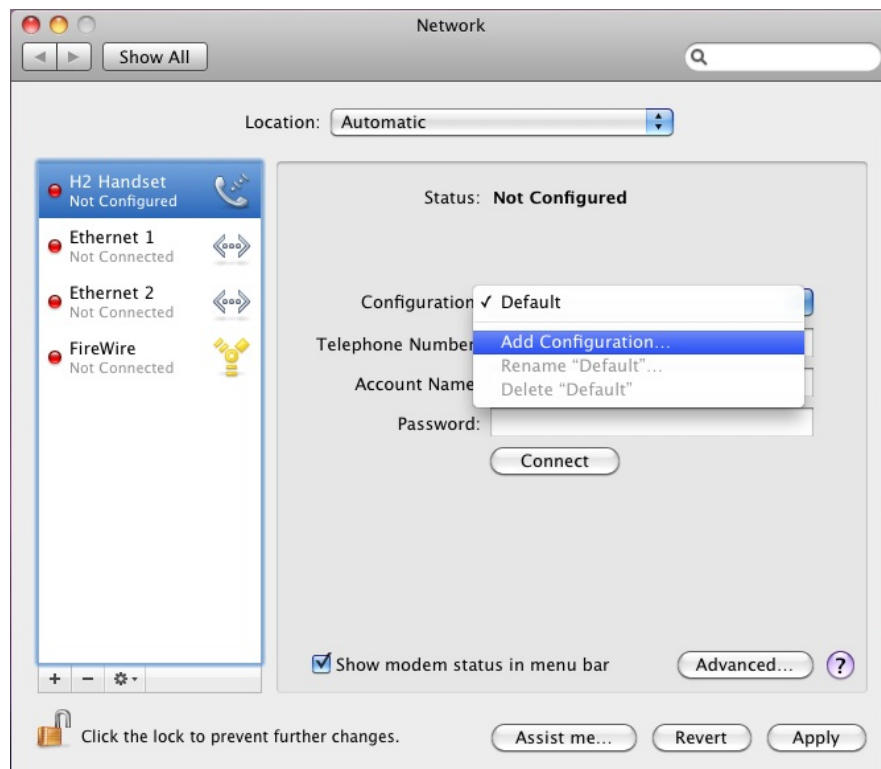
- 3) Select the **System Preferences** icon. 



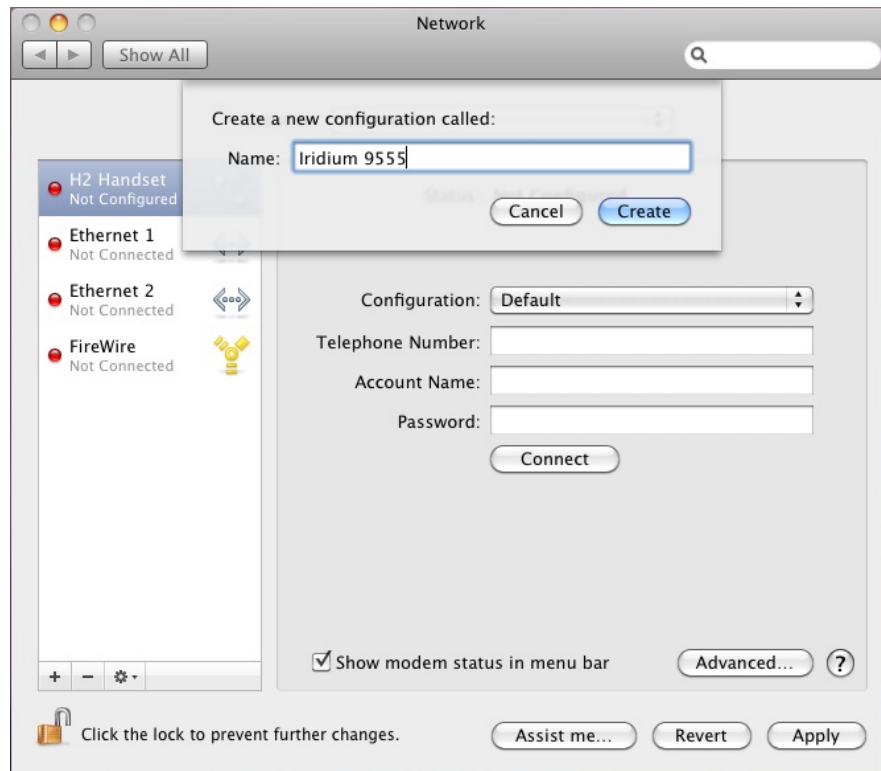
- 4) Select **Network** from the **System Preferences** window.



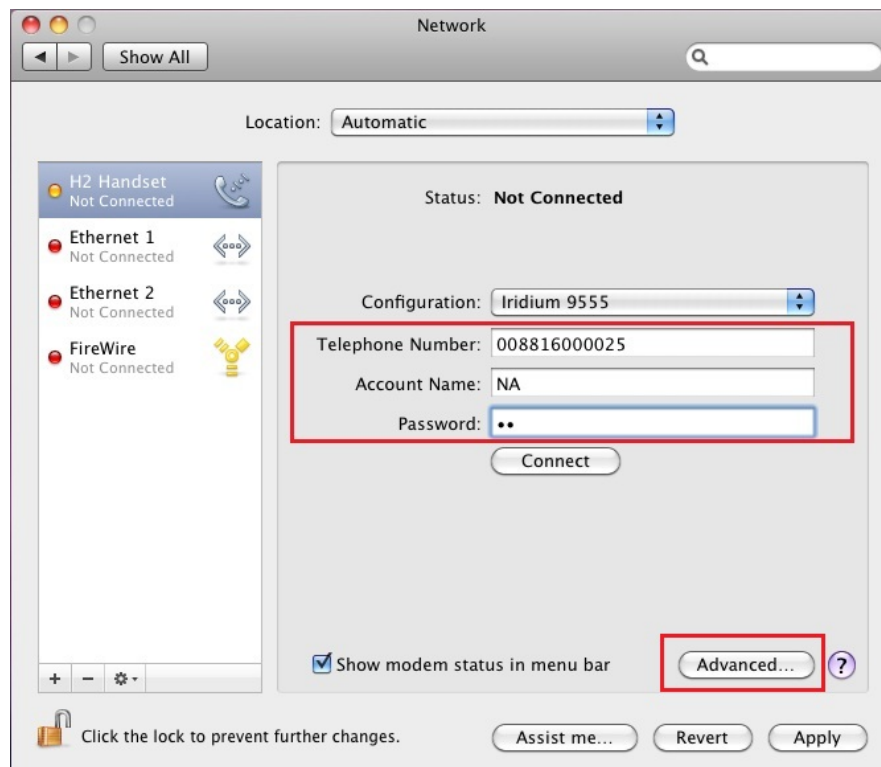
- 5) Select the Iridium Handset from the left pane and select **Add Configuration...** from the **Configuration** pull-down menu.



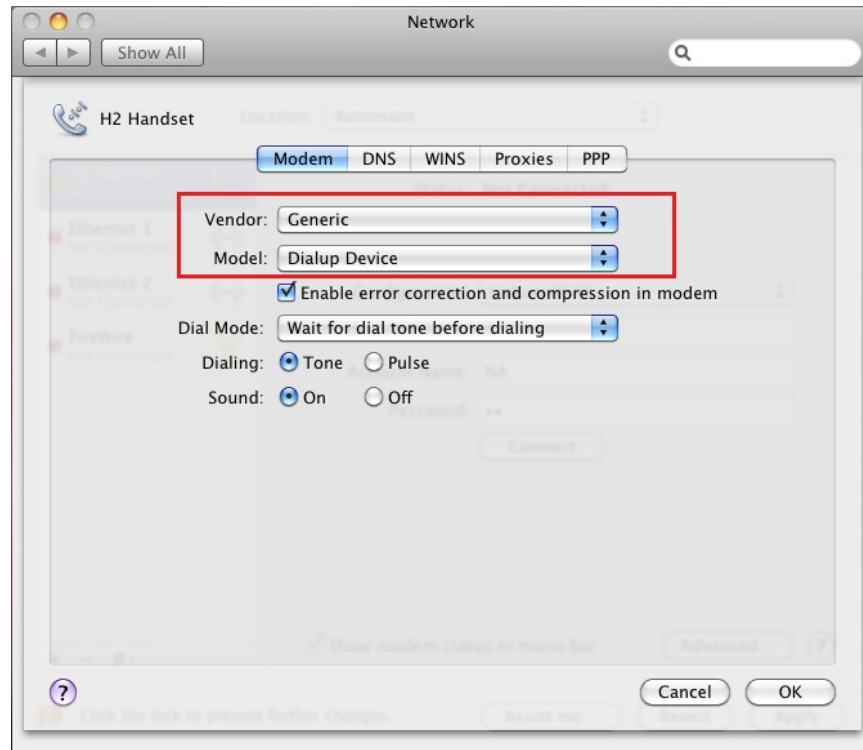
- 6) Enter any name for this connection. Click the **Create** button when done.



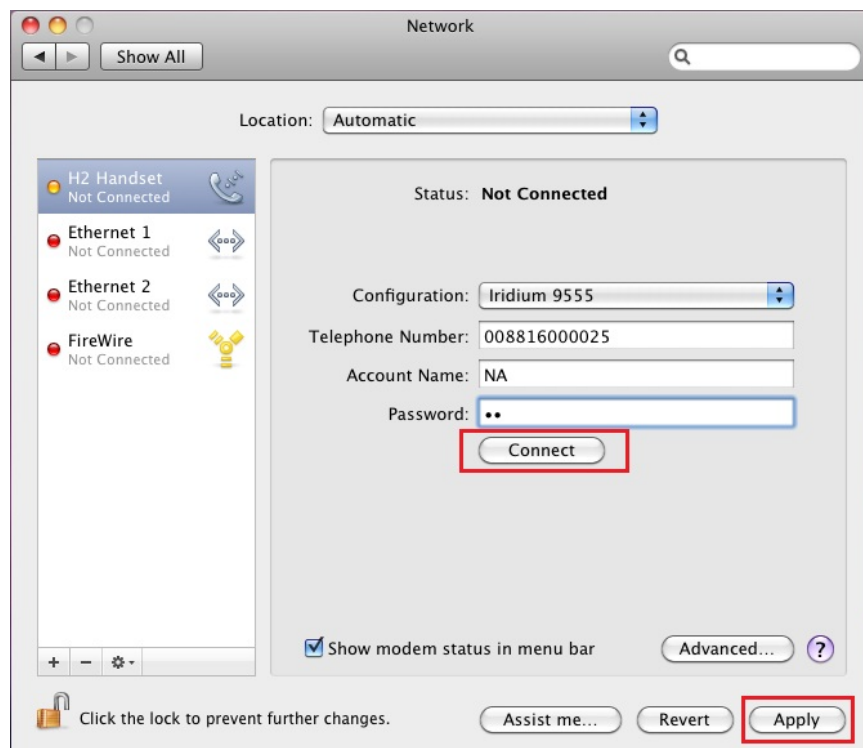
- 7) Enter **008816000025** in the **Telephone Number** field. Enter any **Account Name** and **Password**. Click on the **Advanced...** button.



- 8) In the **Modem** tab, select **Generic** from the **Vendor** pull-down menu. Also, select **Dialup Device** from the **Model** pull-down menu. Click **OK** to save changes.



- 9) Click **Connect** to establish a connection to Direct Internet 3 or click **Apply** to save the configuration.

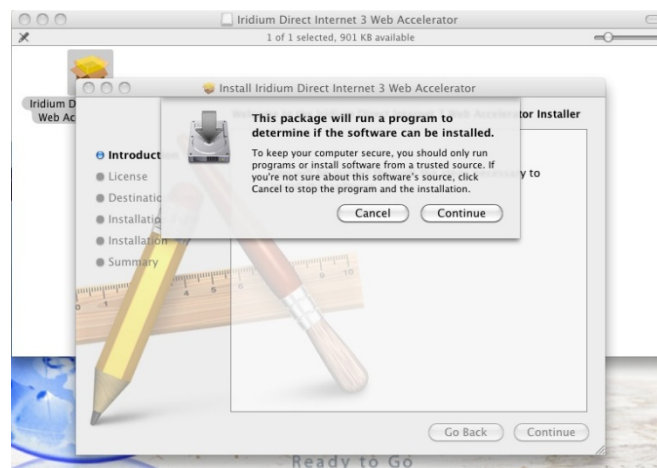


Install Web Accelerator

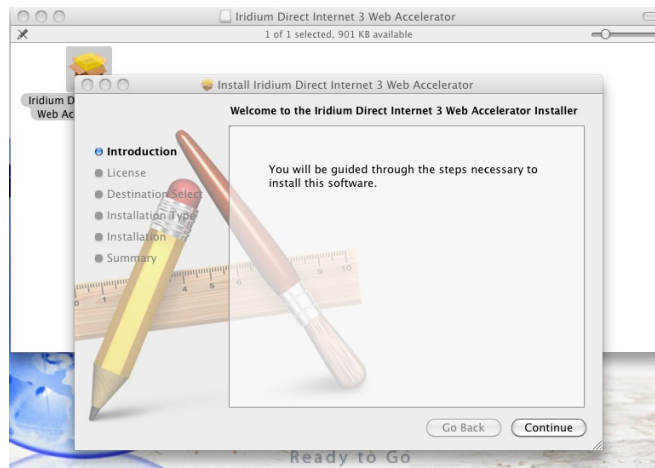
- 1) Open the disk with the installer and double click the install package.



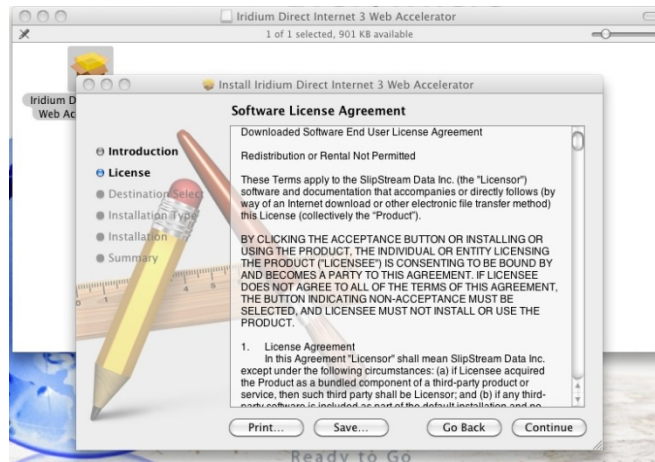
- 2) Click **Continue** to allow the installer to see if it can install the software.



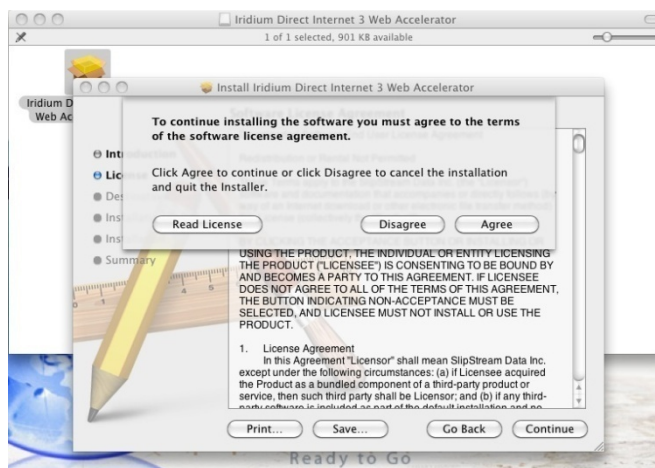
3) Click **Continue** to begin the install process.



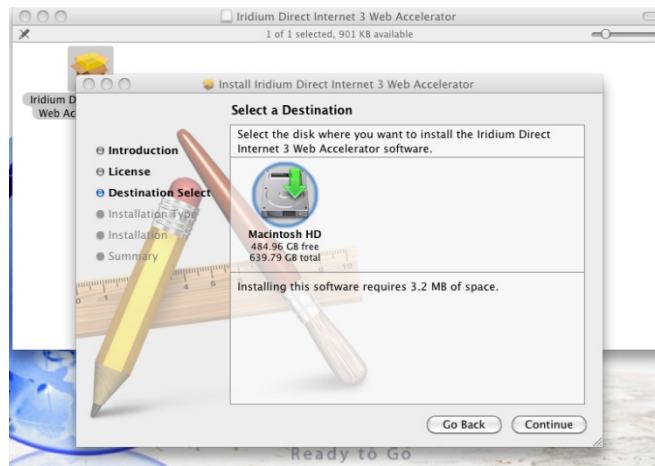
4) Click **Continue** to allow the installer to see if it can install the software.



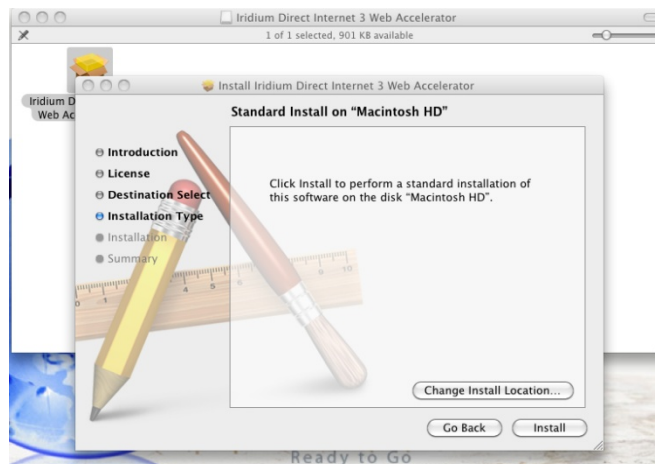
5) Click **Agree** to allow the installer to install the software.



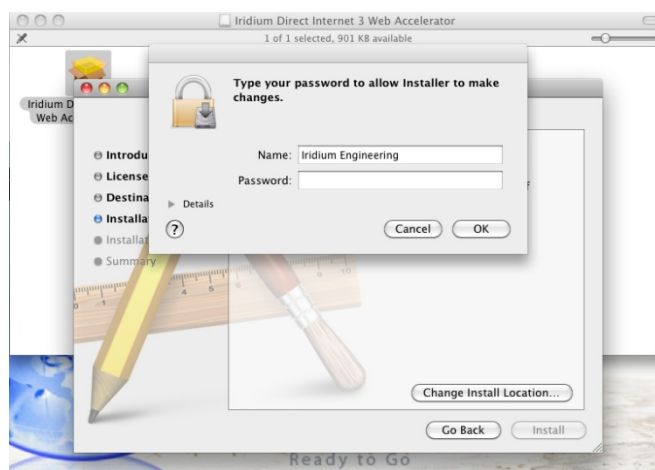
6) Click **Continue** to allow the installer to install in the default location.



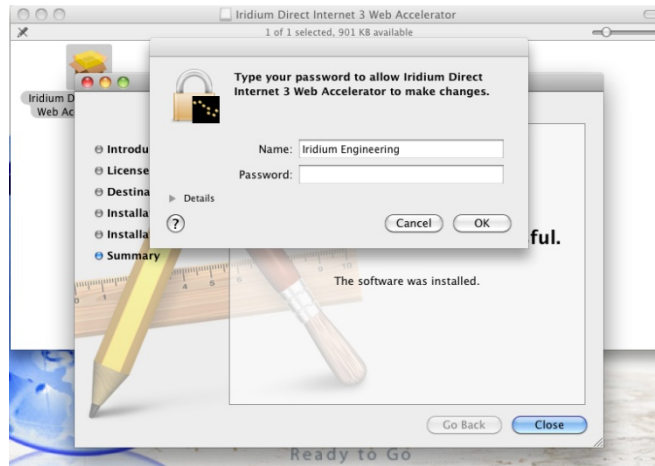
7) Click **Install** to confirm the default install location.



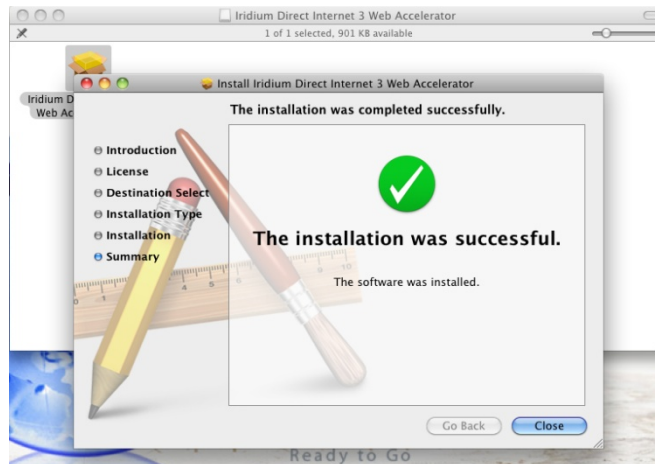
8) Enter your user *Name* and *Password*, and click **OK**.



9) Enter your user *Name* and *Password*, and click **OK**.



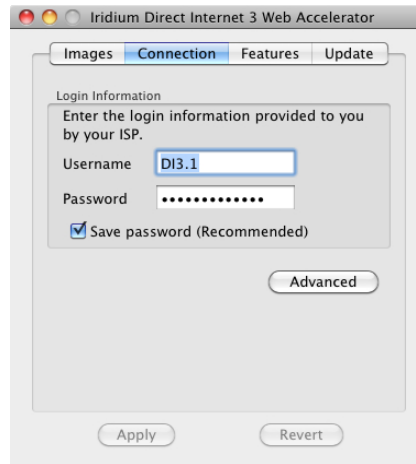
10) Click **Close**.



11) The window should have opened, select the *Connection* tab.



12) Enter any user *Name* and *Password*. Click the **Advanced** button.



13) Verify the following settings, and click **OK**.



14) You are now set up, and the application should be in the Applications folder.

Uninstall Web Accelerator

- 1) Open the Applications folder.
- 2) Drag the Iridium Direct Internet 3 Web Accelerator program to the Trash Bin.
- 3) Empty Trash Bin.

Troubleshooting

Symptom	Cause	Action
I cannot install the Iridium PPP Data Modem on the COM port that is currently connected to my Iridium phone or transceiver. The COM port does not show up as an option for installing the Iridium PPP Data Modem.	<ol style="list-style-type: none"> 1. The Iridium PPP Data Modem is already installed on the desired COM port. 2. There is a bad physical connection between the COM port and the Iridium satellite phone or transceiver. 	Check the physical connection between the Iridium phone or transceiver and the COM port on your computer. This includes making sure the Iridium satellite phone or transceiver is powered on during installation and plugged in to the desired COM port.
Waiting for a particular installation dialog box to appear but it never does.	Occasionally, dialog boxes appear behind other dialog boxes during the installation.	Move any open dialog boxes to reveal any hidden dialog boxes.

Iridium Communications Inc. 1750 Tysons Boulevard, Suite 1400, McLean, VA 22101 U.S.A.

Iridium and the Iridium logo are registered trademarks and/or service marks of Iridium Communications Inc.

Mac and Mac OS are trademarks of Apple Inc., registered in the United States and other countries.